

TOGGLE CLAMPS



VTC Series Heavy Duty Clamps



VTC Light Duty - Flanged Base
Holding Capacity 50 -100 Kgs



VTC Medium Duty - Flanged Base
Holding Capacity 200 -800 Kgs



VTC Medium Duty - Straight Base
Holding Capacity 100 -600 Kgs



VTC - Series Medium Duty Clamps -
Front Mounting



Cam Action Clamps



H - Series Miniture Clamps



H - Series Medium Duty Clamps



Pull Back Action



HTC - Series Forged Base
Holding Capacity : 300 Kgs - 4500 Kgs



HTC - LH Series
Holding Capacity : 600 Kgs - 800 Kgs



HTC - Series Flat Handle
Holding Capacity : 600 Kgs - 800 Kgs



HTC - Series Package Size
Holding Capacity : 100 Kgs - 3500 Kgs



HTC - Series Front Mounting
Holding Capacity : 50 Kgs - 350 Kgs



PAV - Series
Holding Capacity: 100 Kgs - 1,000 Kgs.



PA - Series
Holding Capacity: 75 Kgs - 500 Kgs



PAH - Series Light Duty
Holding Capacity: 100 Kgs. - 350 Kgs.



PAH - Series Heavy Duty
Holding Capacity: 950 Kgs - 3,000 Kgs.



Latch - Clamps

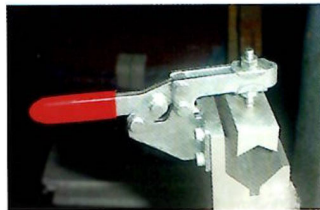


Squeeze Action Clamps

APPLICATIONS



H-45105-UB on Co2 Welding fixture



H-4835-UB/FM in gauge checking fixture

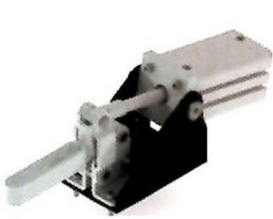


HTC - 5065 used in a pipe bending machine

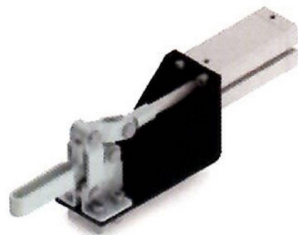


PAH - I210 in a Vibro- finishing machine

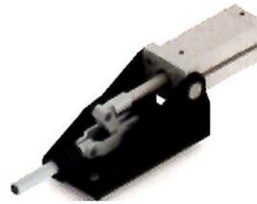
PNEUMATIC CLAMPS



Hold Down Action



Hold Down Action - Fixed Cylinder



Straight Line Action



SSC Series



H.V. Series



Pneumatic Swing Clamps

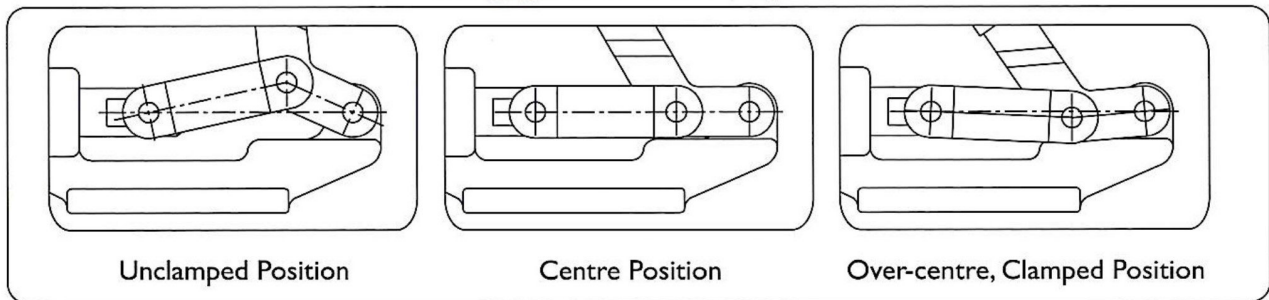


Hydraulic Swing Clamps

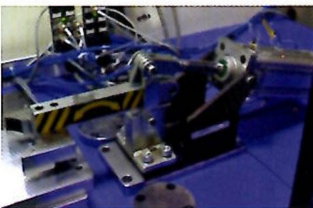


Link Clamps

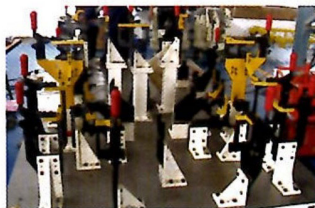
Toggle Principle:



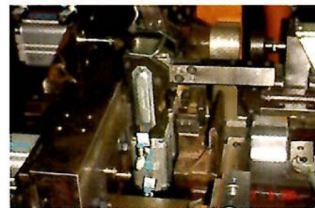
APPLICATIONS



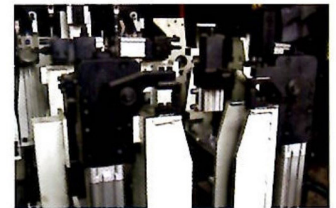
AOT-98125-SB used in a SPM



Numerous HV Series used in a Spot welding fixture



SSC-2550 used in a SPM



DCTC Series clamps on a Welding Fixture

THE CLAMPING ELEMENTS

Flat Strap Clamp

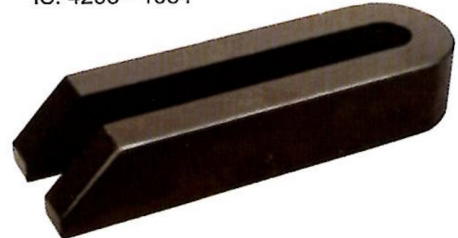
TYPE: T1-FSC IS: 4292 - 1984



Material: Medium carbon steel, Hardened and Tempered to 24-32 HRC and Chemically Blackened.

U Clamp

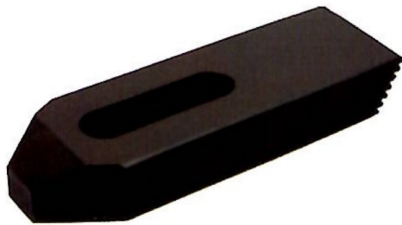
TYPE: T1-UC IS: 4293 - 1984



Material: Medium carbon steel, Hardened and tempered to 24-32 HRC and Chemically Blackened.

Serrated Strap Clamp

TYPE: T1-SSC DIN: 6314 Z



Material: Medium carbon steel, Hardened and tempered to 24-32 HRC and Chemically Blackened.

Applications: On machines for work holding in combination with Universal Serrated Blocks (Type: T3-USB) for instant height adjustment.

Press Tool / Milling Clamp

TYPE: T1-PTMC

Material

Clamping Pad: High tensile S.G. Iron Enamelled in Flame Red Colour

T-Bolt, HN: Medium Carbon Steel, Hardened and tempered to 24-32 HRC and Chemically Blackened

Swivel Nut: Medium Carbon Steel Chemically Blackened



Applications :

- On Presses for holding tools, dies
- On Machine beds for holding flat components, castings.

Press Mould Clamp

TYPE: T1-PMC

Material:

Clamp, Fulcrum and Saddle: High tensile S G Iron, Enamelled in Flame Red colour.

T-Bolt, Flanged Hex Nut: Medium Carbon Steel Hardened and tempered to 24-30 HRC and Chemically Blackened.



Note: T1-PMC is supplied with T-Bolt as standard.

Applications : On Presses, Plastic Moulding machines, Milling and Drilling Machines.

Quick Clamp

TYPE: T1-QC

Material:

Clamp and Saddle: High tensile S G Iron, Enamelled in Flame Red colour.

T-Bolt, Flanged Hex Nut: Medium Carbon Steel Hardened and tempered to 24-30 HRC and Chemically Blackened.



Note: T1-QC is supplied with T.Bolt as standard. Clamping Stud is optional.

Applications : On Presses, Plastic Moulding machines, Milling and Drilling Machines and CNC Machining Centres.

Mould Clamp with Heavy Support Bolt

TYPE: T1-MCH

Mould Clamp offers counter height adjustment by heavy duty support bolt with hex, round base and lock nut.

Material: Medium Carbon Steel, Hardened and tempered to 24-30 HRC and Chemically Blackened

Applications : Plastic Moulding machines

Note: T1-MCH is supplied with the Clamp, Support Bolt and Lock Nut.

T-Bolt/Stud, Hex Hi-Nut and Washer are optional.



Flanged Hex Nut

TYPE: T2-FHN IS: 7795 - 1975

Material:

Medium carbon steel, Hardened and tempered to 24-32 HRC and Chemically Blackened



THE CLAMPING ELEMENTS

Forged T-Bolt

TYPE: T2 - TB IS: 2014 - 1996



Material: Medium carbon steel, Hardened and tempered to 8.8 Grade as per IS: 1367-2002 (Part III) and Chemically Blackened

Note: We can manufacture non-standard T-Bolts in 8.8, 10.9 and 12.9 Grade as per given drawings on request.

T Nut

TYPE: T2-TN IS: 2015 - 1977



Material: Medium carbon steel, Hardened and tempered to 24-32 HRC and Chemically Blackened.

Hex Hi-Nut

TYPE: T2-HN DIN: 6330



Material: Medium carbon steel, Hardened and tempered to 24-32 HRC and Chemically Blackened.

Extension Nut

TYPE: T2-EN DIN: 6334



Material: Medium carbon steel, Hardened and tempered to 24-32 HRC and Chemically Blackened.

Clamping Stud

TYPE: T2-CS IS: 13178 - 1991



Note: Other sizes/grades available on request.

Material: Medium carbon steel, Hardened and tempered to 8.8 grade as per IS : 1367 – 2002 (Part III) and Chemically Blackened.

Plain Washer (Thick)

TYPE: T3-PW-DIN DIN: 6340



Material: Low carbon steel, Case hardened to 35-42 HRC and Chemically Blackened.

Spherical Washer with Conical Seat

TYPE: T3-SWCS IS: 4297 - 1996



Material: Low carbon steel, Case hardened to 35-42 HRC and Chemically Blackened.

C Washer

TYPE: T3-CWN IS: 4291 - 1996



Material: Low carbon steel, Case hardened to 35-42 HRC and Chemically Blackened.

Rhombus T-Nut

TYPE: T2-RTN



Material: Medium carbon steel, Hardened and tempered to 24-32 HRC and Chemically Blackened.

Universal Serrated Block

TYPE: T3-USB

Material: Medium carbon steel, Hardened and tempered to 24-32 HRC and Chemically Blackened.

Applications: Combinations of 3 sizes in each group offers instant height adjustment for work support. Also recommended for use along with serrated strap clamp (Type: T1-SSC)



STRUCTURAL FASTENERS OF HEAVY MANUFACTURING INDUSTRIES.

HIGH STRENGTH STRUCTURAL BOLTS

Dimensional Standards

IS 3757, ISO 7412, DIN 6914, BS 4395, ASTM A325

Range

Metric : M16 - M36 / Inches : 1/2" - 1.1/4"

Grade

8.8S, 10.9S



HEAVY HEX NUT

Dimensional Standards

IS 6623, ISO 4775, DIN 6915, ASTM A194 GR.2H

Range

Metric : M16 - M36 / Inches : 1/4" - 2"

Grade

8S, 10S, 2H



HIGH STRENGTH FRICTION GRIP WASHERS

Dimensional Standards

IS 6649, ISO 7415, DIN 6916, BS 4395

Range

Metric : M16 - M36 / Inches : 1/4" - 1.3/8"

Grade

HARDENED (35-45 HRC PLAIN)



HEX DOME NUTS

Dimensional Standards

DIN 1587

Range

Metric : M3 - M30 / Inches : Against Order

Grade

8, 10



THREADED RODS

Dimensional Standards

DIN 975, ASTM A194 GR. B7, L7

Range

Metric : M10 - M48 / Inches : 1/2" - 1.1/2"

Grade

En8, EN19, B7, SS304, SS316



HEX JAM NUTS

Dimensional Standards

DIN 936, ISO 4035, ASME B18.2.2

Range

Metric : M6 - M30 / Inches : 1/4" - 1"

Grade

8, 10, SS304, SS316 (Against Order)



HEX WELD NUTS

Dimensional Standards

DIN 929, IS 8856

Range

Metric : M4 - M12 / Inches : Against Order

Grade

M.S.



SQUARE WELD NUTS

Dimensional Standards

DIN 928, JIS B1196

Range

Metric : M4 - M12 / Inches : Against Order

Grade

M.S.



HEX BOLTS

Dimensional Standards

IS 1364, ISO 4014, ISO 4017, DIN 933, DIN 931, BS 1083, BS 1768, ASME B18.2.1, JIS B1180

Range

Metric : M6 - M100 / Inches : 1/4" - 2"

Grade

8.8, 10.9, 10.9S, SS304, SS316



SOCKET HEAD CAP SCREWS

Dimensional Standards

IS 2269, ISO 4762, DIN 912, BS 2470, ASME B18.3.1M, JIS B1176

Range

Metric : M6 - M48 / Inches : 1/4" - 1"

Grade

8.8, 12.9, Ss304, SS316



HEX NUTS

Dimensional Standards

IS 1364, ISO 4032, DIN 934, DIN 931, BS 1083, BS 1768, ASME B18.2.4.1M, ASMI B18.2.2, JIS1181

Range

Metric : M6 - M100 / Inches : 1/4" - 4"

Grade

8, 10, SS304, SS316



COUNTERSUNK SOCKET CAP SCREWS

Dimensional Standards

DIN 7991, IS 6761, ASME B18.3.1M, BS 4168, BS 2470

Range

Metric : M4 - M20 / Inches : 1/8" - 5/8"

Grade

8.8, 12.9, SS304, Ss316 (Against Order)



NYLOCK NUTS

Dimensional Standards

DIN 982, DIN 985, ISO 7040, ISO 10511

Range

Metric : M4 - M36 / Inches : 1/4" - 1"

Grade

8, 10, SS304, SS316



SOCKET BUTTON HEAD CAP SCREWS

Dimensional Standards

DIN 9427, ISO 7380, BS 4168, ASME B18.3.4M

Range

Metric : M4 - M12 / Inches : 1/8" - 1/2"

Grade

10.9, 12.9, SS304, SS316 (Against Order)



FLANGE NUTS

Dimensional Standards

DIN 5923, JIS B1190

Range

Metric : M4 - M30 / Inches : Against Order

Grade

8, 10, SS304, SS316



SOCKET SET SCREWS

Dimensional Standards

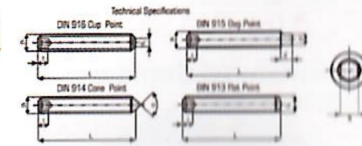
DIN 913, 914, 915, 916, ISO 7379, BS 4168

Range

Metric : M3 - M20 / Inches : 1/4" - 3/4"

Grade

8.8, SS304, SS316



SOCKET SHOULDER BOLT

Dimensional Standards

DIN 9841, BS 4168, ISO 7379

Range

Metric : M6 - M30 / Inches : Against Order

Grade

8.8, SS304, SS316 (Against Order)



SOCKET LOW HEAD CAP SCREWS

Dimensional Standards

DIN 7984, ASME B18.3.1MA

Range

Metric : M6 - M24 / Inches : 1/4" - 1"

Grade

8.8, 12.9, SS304, SS316



SOLID DOWEL PINS

Dimensional Standards

DIN 6325, IS 6669

Range

Metric : M3 - M20 / Inches : Against Order

Grade

En8



CASTLE HEX NUTS

Dimensional Standards

DIN 935, ISO 7035

Range

Metric : M6 - M20 / Inches : 1/4" - 5/8"

Grade

8, 10



SPRING DOWEL PINS

Dimensional Standards

DIN 1481

Range

Metric : M2 - M12 / Inches : Against Order

Grade

En8



SPLIT PINS (COTTER PINS)

Dimensional Standards

DIN 94

Range

Metric : M2 - M10 / Inches : 1/8" - 3/8"

Grade

M.S.



PLAIN WASHER

Dimensional Standards

IS 2016

Range

Metric : M6 - M100 / Inches : 1/4" - 2"

Grade

M.S., EN8, SS304, SS316



SPRING WASHERS

Dimensional Standards

DIN 7980, DIN 127, IS 6735, IS 3063, BS 4464, BS 1802

Range

Metric : M6 - M36 / Inches : 1/4" - 1"

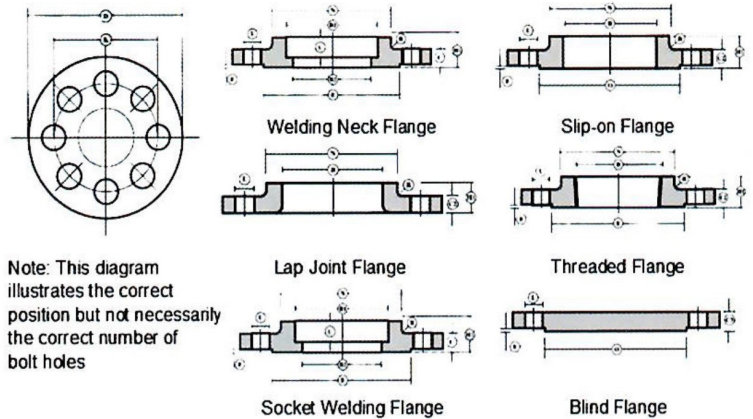
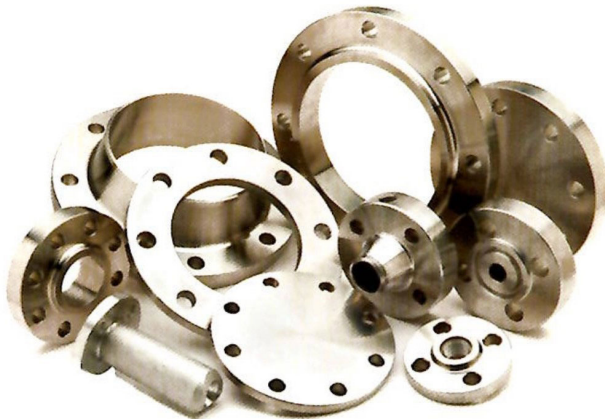
Grade

M.S. EN42, SS304, SS316



FLANGES

We manufacture flanges with our own brand **HISW**



Sr.No	Standards	Ratings	Sizes
1	ANSI B 16.5	150 lbs - 3000 lbs	15 NB - 300 NB
2	BS	PN 6 - PN 40. Table A - T	15 NB - 3000 NB
3	DIN	PN 10 - PN 40	15 NB - 300 NB
4	AWWA	Class B & D. Table 1 & 2	100 NB - 1800 NB
5	TAYLOR	Class 125-175	650 NB - 2100 NB
6	JIS2	Rating 5K - 30K	15 NB - 300 NB
7	AS	Table D - T	15 NB - 300 NB
8	As per Customer Diagram	*	Upto OD 2300 mm



DIN/IS/BS

PIPE FITTINGS (STEEL)



Sr.No	Standards	Ratings	Sizes
1	Socket Weld	3000 lbs	15 NB - 50 NB
2	Threaded	3000 lbs	15 NB - 50 NB
3	Buttweld	Sch 20 - Sch 80	15 NB - 600 NB

(PVC, UPVC, CPVC)

